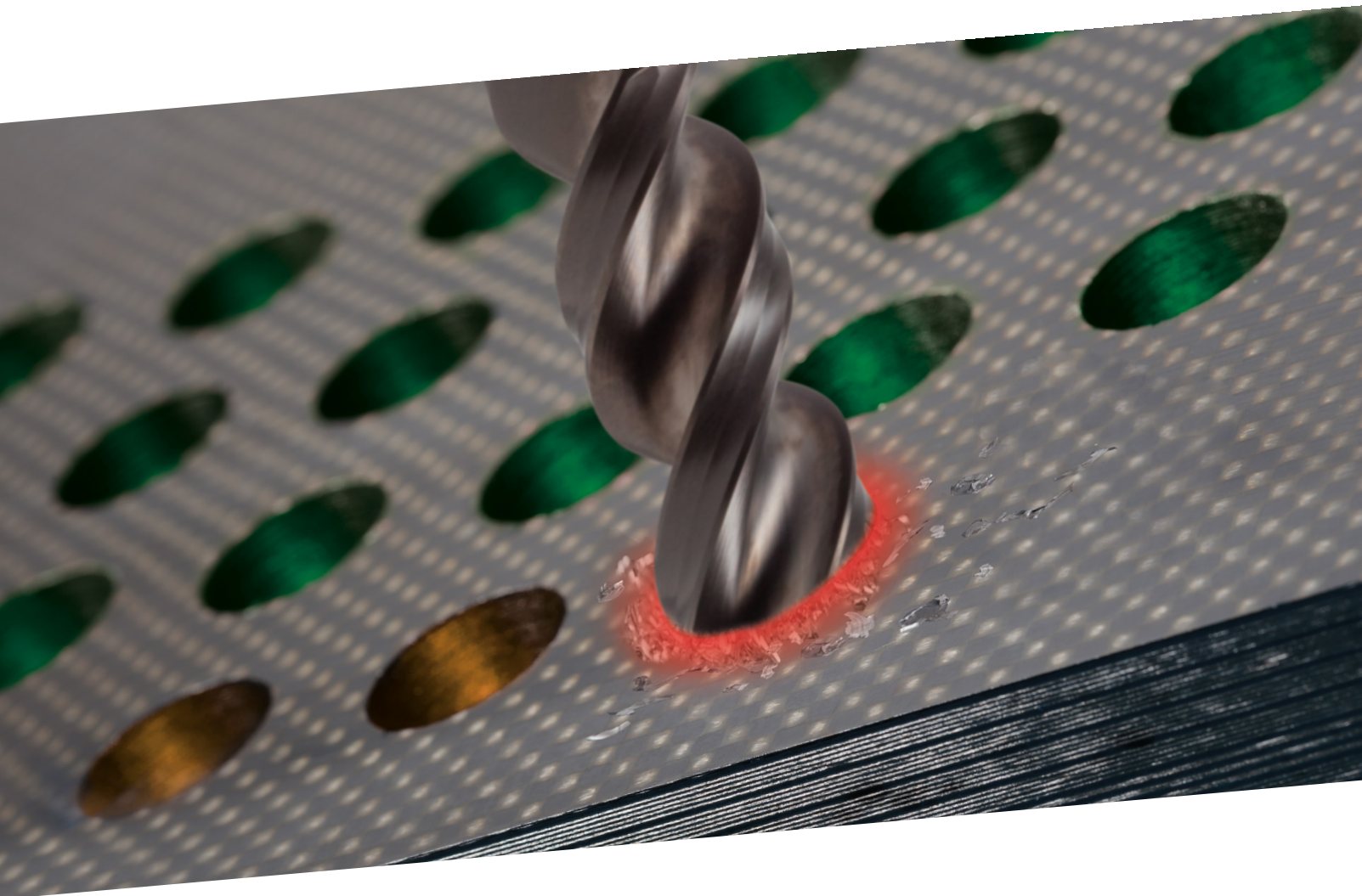




**promicron**  
wireless solutions



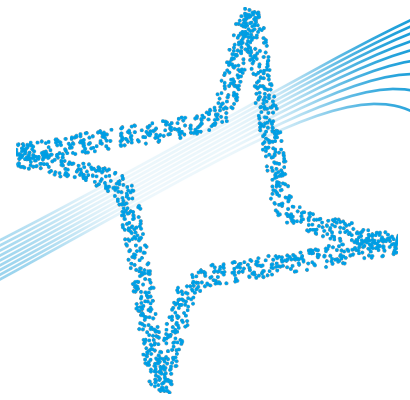
DO YOU KNOW  
YOUR CRITICAL  
**TOOL FAILURE POINT?**



MACHINE DATA  
with **pm\_connector**



**spike**® DATA



**spike**®\_polar

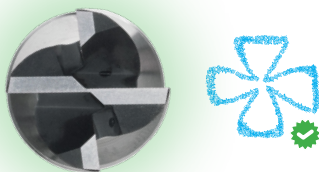
## PROCESS DATA TRACKING

With **spike**®, it is possible to **measure the forces directly at the point of action** and **visualize them live during the process** per individual cutting edge.

This provides permanent feedback on the **condition of the cutting tool**(-wear) and thus indirectly **on the quality of the workpiece** achieved (surface, shape & position tolerances, dimensional accuracy, etc.).

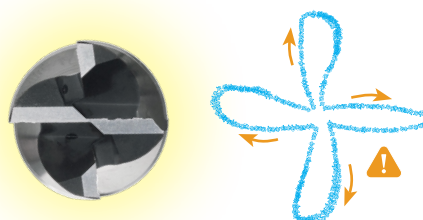
Measuring the forces enables the visualization of details others can't see. Our **highest sensitivity sensors** are especially relevant for **high-quality production**.

### NEW TOOL



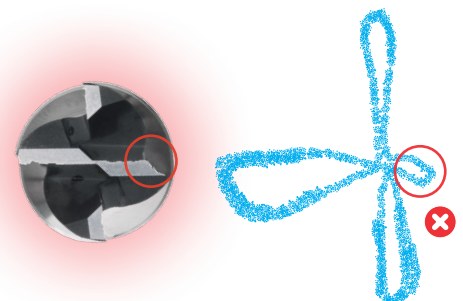
low forces,  
symmetrical **spike**®\_polar

### WORN TOOL



increased bending moment,  
**spike**®\_polar enlarged

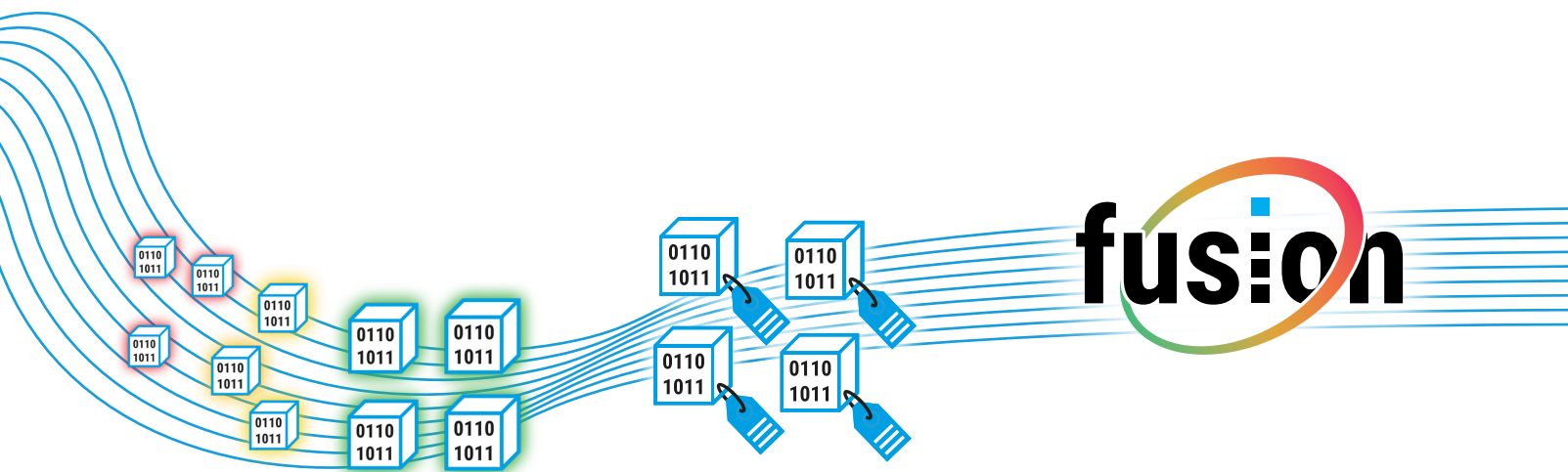
### BROKEN CUTTING EDGE



Cutting edge broken,  
force dropped locally

# SENSORS

Highly sensitive. Intelligent. Wireless. Machine integrated or plug&play.



RAW DATA  
PREPARATION

DATA REFINING  
& LABELING

DATA MANAGEMENT  
& EXPORT / IMPORT

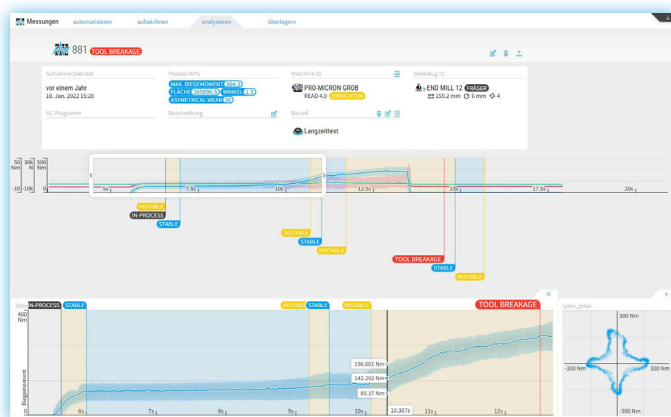
## AUTOMATED DATA PREPARATION

To efficiently **manage the large amount of raw data** available, tools for automatically storing, sorting, labelling, synchronizing, validating, etc. are needed.

Within our web-based and open interface software **fusion**, the **data is prepared and refined** so that it can be efficiently **interpreted and correlated** without much manual effort.

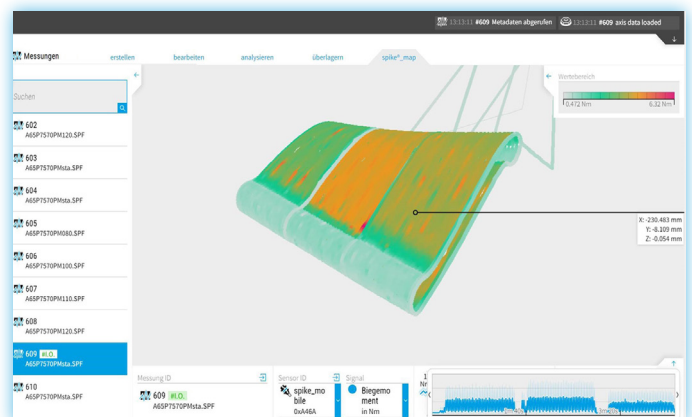
After that, your process data is **ready to be used for AI training** and, for example, **the creation of a digital twin**.

**store | sort | label | sync**



Automated labeling of key points in the process inside fusion

**spike<sub>map</sub>**



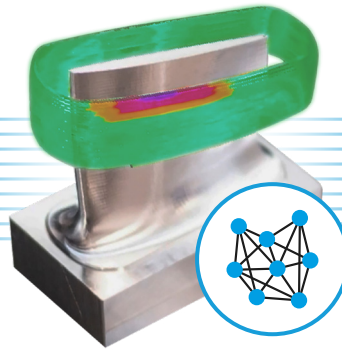
Quality control with digital twin

# SOFTWARE

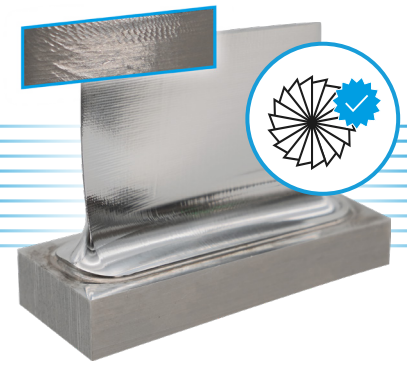
For automated data preparation.



ANALYSIS &  
CORRELATION



ALGORITHMS  
with **spike**<sub>map</sub>



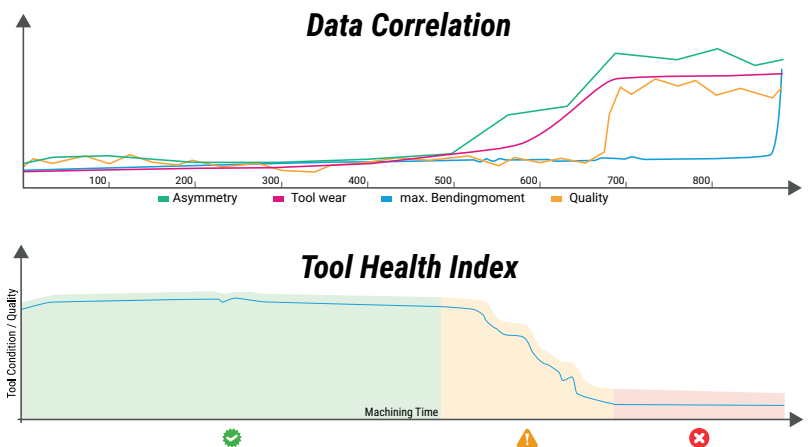
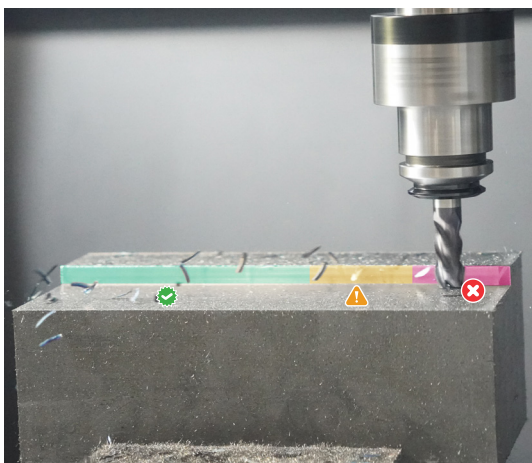
QUALITY CONTROL

## TRANSFORMATION OF DATA INTO KNOWLEDGE

The **prepared data** can now be transformed into knowledge by various data science approaches.

Methods such as process specific indicators (**spike@\_kpi** for symmetry or chatter), **digital twinning**, or **tool health indexes** enable the user to detect and even predict the critical **TOOL FAILURE POINT**.

As a result these parts are now **protected from becoming scrap parts**, leading to **reduced downstream costs** and **increased production efficiency**.



# DATA SCIENCE

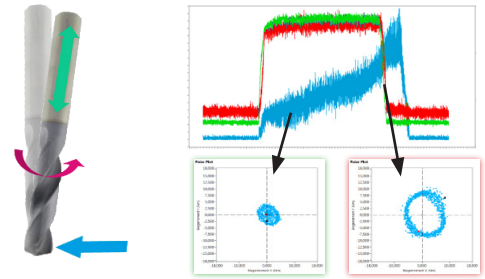
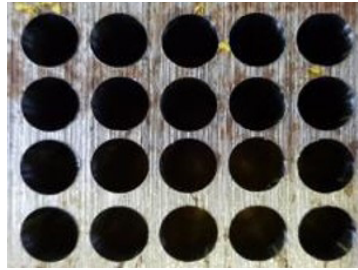
Real-time quality result prediction using AI algorithms.

# spike® USE CASES



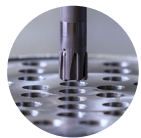
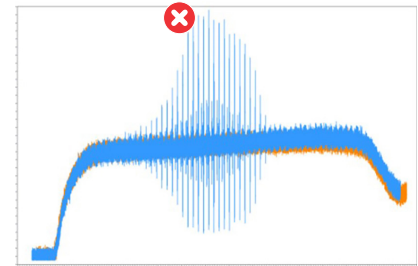
## DRILLING

run out / offset / wear / breakage



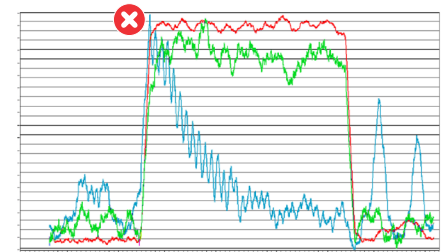
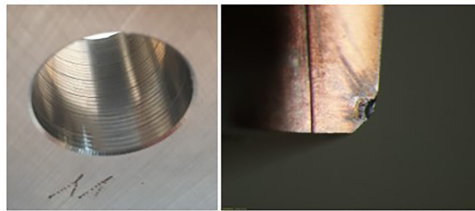
## TURNING

chatter / dimensions accuracy offset



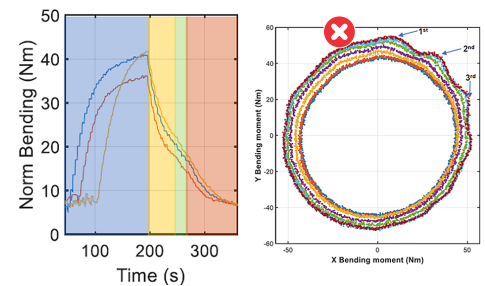
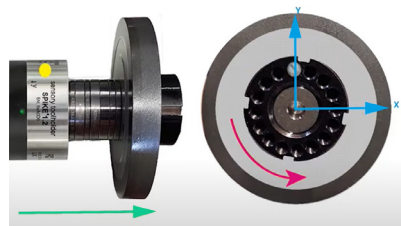
## REAMING

tool wear / cutting edge breakage



## GRINDING

grinding burn / tool wear

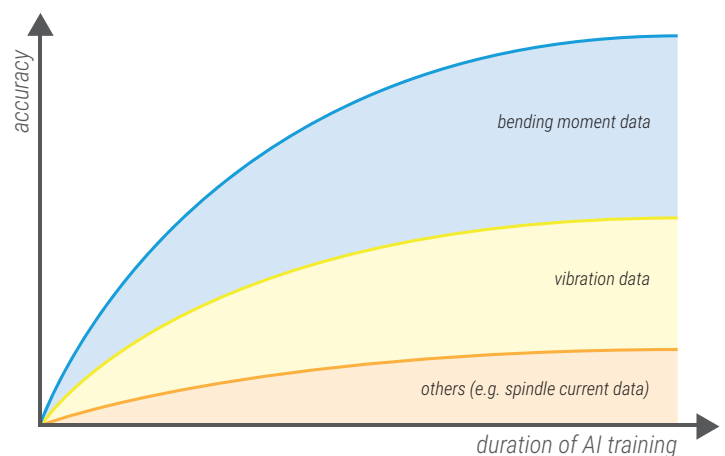


## FURTHER APPLICATIONS

0,3mm drilling | 2,5mm threading | FSW | ...

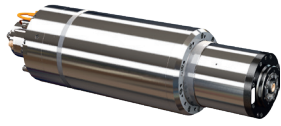
## WHY PRO-MICRON?

- 1 spike® delivers the highest sensitivity & high quality data
- 2 Data collection and preparation for optimizing AI use in **fusion**
- 3 AI training and digital twin by our data scientists



# AVAILABLE SENSORS

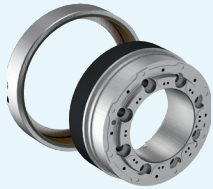
## FOR HIGH QUALITY DATA COLLECTION



### MACHINE DATA

- spindle torque
- axis data
- NC code
- meta data

### spike<sup>®</sup>\_polar generative



### spike<sup>®</sup>\_inspindle

- machine integrated
- absolute values (Fz, Mx, My, SiS+)
- HSK-A63 / A-100 / A-80



### spike<sup>®</sup>\_mobile

- process specific
- absolute values (Fz, Mx, My)
- all holder types
- diff. sensitivity classes (finishing/roughing op.)

COMING  
SOON



### spike<sup>®</sup>\_mobile\_rs

- process specific
- relative signal & vibration (~ 8 kHz)
- < HSK-E40
- Highest sensitivity (for micro machining)
- Up to 40.000 rpm

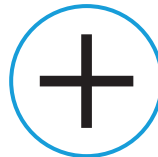
## START NOW WITH

### DATA-TRACKING SET

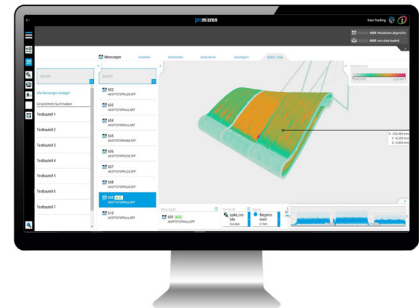


#### FLEXIBLE DIAGNOSTIC SET (MANUAL)

- Can be used across machines
- Laboratory use
- Plug&Play < 1 minute
- Laptop



### ANALYSIS TOOL



#### fusion SOFTWARE

- Web based
- API possibility
- Export / Import
- Server / Laptop



#### RETROFIT SERIES / PILOT MACHINE (AUTOMATED)

- All sensors
- Automated data recording
- Retrofittable < 2 days
- Edge / IPC

## YOUR spike<sup>®</sup> CONTACT

"Discuss your challenge with us, test our solution and take the next step towards autonomous machining in your production!"



### Lennart Riehle

Head of Sales (Tool Control)  
+49 8341 9560 – 50

[inquiry@pro-micron.de](mailto:inquiry@pro-micron.de)  
[www.pro-micron.de/spike-en/](http://www.pro-micron.de/spike-en/)